

CONTACT US

1034 S. Brentwood Blvd.
Suite 410
Richmond Heights, MO
63117

Phone (314) 726-4747
Fax (314) 726-1520

Email: staff@stlmuni.org

www.stlmuni.org



MUNICIPAL LEAGUE
OF METRO ST. LOUIS

THE Link

LINKING LOCAL COMMUNITIES | STRENGTHENING LOCAL GOVERNMENT

September 2018

UPCOMING LEAGUE MEETING

Thurs., September 27
Membership Meeting
City of Twin Oaks

INSIDE THIS ISSUE

- **MO Proposition D, page 2**
- **UMSL P&Z Certificate, page 2**
- **Park Commission News, page 3**
- **Legislative Affairs Committee, page 4**
- **Missouri Jobs Report, page 5**
- **November Ballot, page 6**
- **Recycle Dirty Dozen, page 7**

September Membership Meeting in Twin Oaks

The City of Twin Oaks will host the next Membership meeting on Thursday September 27 at their new Town Hall located at 1381 Big Bend Road, Twin Oaks, MO 63021; ([MAP](#)). The City Hall is located on the northeast corner of Highway 141 and



Bib Bend, in the Schnuck's Shopping Center.



The Village of Twin Oaks was incorporated in 1939. In November 2016 the residents supported a ballot initiative to become a fourth-class city. This will be the first time Twin Oaks has hosted a league meeting. It was made possible because the city dedicat-

ed its first city owned Town Hall this past March; a 5,500 square foot, \$1.7 million facility. Refreshments will be served at 6:30 and the meeting will begin at 7:15

Program: In July of 2017 China announced it would stop importing most recycled plastic and paper from the United States and in August Resource Management here in St. Louis to announced it would stop processing residential single-stream recycled materials after October 31, 2018. These actions are forcing municipalities to evaluate the future of their recycle programs.

Brent Batliner, GM of Republic Services Recycle Facility, and Stephen Herring, Manager of Recycling, will discuss the future of recycling in our region. They will talk about what municipalities can do in the short-term and long-term to sustain their recycling programs.



Proposition D

Safer Roads / Strengthen Law Enforcement



The Municipal League of Metro St. Louis hosted an informative presentation on Missouri's Proposition D, a measure for a ten-cent fuel tax increase to fund state law enforcement and maintenance for highways, bridges, roads, and streets. The meeting was held at the Maryland Heights Community Center where more than 125 people attended.



If approved by the voters and when fully implemented the estimated annual revenue will be \$412 million with \$61.8 going to municipalities. For a complete list of the revenue by county and city go to: <http://www.safermo.com/2018/08/10-cent-Motor-Fuel-Tax-Total-Distribution-for-Cities-and-Counties-Grouped-by-County.pdf>

For more information on Proposition D, you can also visit; <http://www.safermo.com/>

Chancellor's Certificate in Fundamentals P & Z

Entering its 15th year in 2018, the Fundamentals of Planning and Zoning Chancellor's Certificate has educated hundreds of members of the St. Louis planning community. Fundamentals of Planning and Zoning is taught by a team of senior practitioners, who have extensive knowledge and experience in local government planning in Missouri, Illinois and across the nation. Course modules cover planning practices, processes and topics that are crucial for local government success.

The Certificate consists of seven modules that include lecture and discussion. Participants will earn a noncredit UMSL Chancellor's Certificate in Fundamentals of Planning & Zoning by completing six of the seven modules.

Here is the information for the 2018 program. If you have any questions, please contact Frank Johnson at frank.johnson@ewgateway.org or 314-421-4220. Registration is now open for the 2018 Chancellor's Certificate in Fundamentals of Planning and Zoning! [Click here](#) to register for the Entire Session, or for Individual Sessions.

Round 19 Park Grant Applications

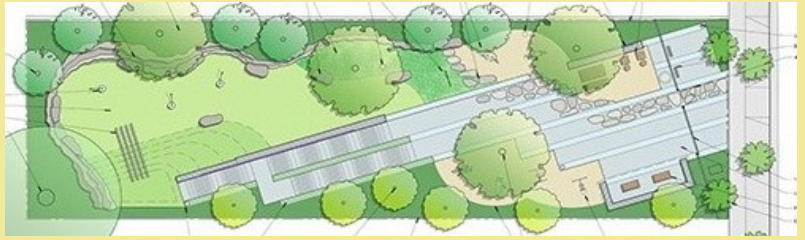
There were 27 grant applications submitted in Round 19 which closed on August 31, at 4:00 PM. The Park Commission has allocated \$6.6 million, the total amount requested was \$8.9 million.

The Commission Advisory Board, led by Des Peres Parks Director Brian Schaffer is scheduled to meet on September 21 to review and score the applications. The Advisory Board recommendations will be presented to the Park Commission on October 12 for final approval.

It is anticipated that the the agreements for the approved grants will be mailed out in early November.



Park Planning Grants Available



The Municipal Park Grant Commission is accepting applications for quarterly planning grants. The applications are available on the Commission website, www.muniparkgrants.com. Applications are due by October 5 so that they can be reviewed by the Commissioners at their next meeting.

Planning grants can be used for park master plans, master plan updates or for specific park projects. Cities are eligible for up to \$6,400 and are required to match at least 20% of the planning cost. Cities can apply for planning grants annually. Having current, updated planning documents, cost analyses and public input increases the chances for receiving park construction grants.

If you have questions about the Planning Grant applications, please contact the Municipal League office.

Thank You For Supporting the League



MAKING COMMUNITIES BETTER AND BRIGHTER

Ameren Missouri is supporting volunteerism in the communities we serve as part of our mission To Power the Quality of Life.

Learn more at AmerenMissouri.com/community



ENERGY **AT** WORK

**GENERAL
CODE**

A Member of the ICC Family of Companies

Expert Codification Services

New & Revitalized Codes

Code Analysis, Consultation & Updates

Land Use & Planning Integration

Experience the higher standard. Explore the possibilities.

GeneralCode.com | 800.836.8834

Legislative Affairs Committee

The Legislative Affairs Committee reviews and updates the League's legislative policy statements and recommends the legislative priorities for the upcoming session. The policy statements and priorities help facilitate the flow of information between our members and the State Legislature. The committee helps identify opportunities to increase the level of interaction flowing from our members to our legislators, and a reciprocal flow of information from our legislators to our members.

The first meeting is scheduled for September 15. If you have suggestions for policies for the committee to review, please contact the League office at staff@stlmuni.org.

Some items that will be discussed include:

- Failure to Appear - Court reform
- Collection of internet sales tax following the U.S. Supreme Courts ruling overturning the previous court decision in 1992.
- [HB 2242](#) Missouri Municipal Government Expenditure Database.

Invited committee members are:

Mayor Terry Briggs, Bridgeton, Chairman
City Administrator Bola Akande, Brentwood
Mayor Mike Clement, Manchester
City Administrator Matt Conley, St. Ann
Mayor Terry Crow, University City
Mayor Jon Dalton, Town & Country
Mayor Scott Douglass, Clarkson Valley
Mayor Viola Murphy, Cool Valley
Mayor Tim Pogue, Ballwin
Councilmember Cindy Pool, Ellisville
Mayor Harold Sanger, Clayton
Mayor Sam Scherer, Shrewsbury
Councilmember Ruth Springer, Olivette

The entire legislative packet will be submitted to the membership for approval later this fall.



From left to right:
Paul Luhmann, Lorenzo Boyd,
Dennis Lea, Becky Esrock,
Martin Ghafoori

STIFEL | Public Finance

We offer comprehensive financial and bond services, including:

- Complete financial planning model
- Debt modeling and restructuring
- Lower-cost equipment financing
- Meeting tax rate targets

(800) 230-5151, Extension 8477

It's pronounced
(Ste-fuhl)

Stifel, Nicolaus & Company, Incorporated
Member SIPC & NYSE | www.stifel.com/publicfinance
One Financial Plaza | 501 North Broadway | St. Louis, Missouri 63102

JOBS REPORT



Missouri
Unemployment Rate
for May 2018:
3.6%

Missouri's unemployment rate remained at 3.6 percent in May, and total nonfarm payroll employment edged up by 400 jobs.

Missouri's smoothed seasonally adjusted unemployment rate has been 3.6 percent since March and was 3.7 in May 2017.

The estimated number of employed Missourians was 2,937,194 in May, while the number unemployed was 108,288. The jobless total has been edging down since January.

For comparison, the seasonally adjusted U.S. unemployment rate was 3.8 percent in May. Missouri's unemployment rate has now been below the corresponding U.S. figure for 37 consecutive months.

Missouri nonfarm payroll employment changed little in May, the second straight month to show relatively flat employment.

Total nonfarm payroll employment was up by 400 jobs, following a 500-job gain reported in April.

Gains and losses were reported in individual industries in May. Private service-providing industries reported a net gain of 1,100 while manufacturing showed a net loss of 1,900. Local government employment was up by 1,000 in May.

Over the past year, total nonfarm payroll employment in Missouri has grown by 34,300 (+1.2%). Professional and business services employment added 12,500 jobs over the year, with health care and social assistance adding another 8,000. Trade, transportation, and utilities employment was up by 6,900 jobs over the year, while construction employment was down by 1,500.

Two Smoking Measures on November Ballot

Two smoking ban measures will be on the November 6 ballot.

One, sponsored by the Health Coalition would eliminate exemptions for casinos and more than 90 bars allowed under the county's current seven-year-old smoking ban.

The Health Coalition plan also would get rid of other exceptions for nursing homes, cigar bars and up to 20 percent of a hotel's guest rooms. vaping, also known as e-cigarettes, would be banned from indoor public places as well.

The second measure sponsored by the owners of the Hollywood Casino in Maryland Heights, would allowing smoking in half of a casino's gaming areas.

In St. Louis County if two ballot measures with conflicting provisions are both approved by voters, the one getting the most votes prevails.

St. Charles County residents will also be voting on competing smoking ban propositions; currently St. Charles County does not have any laws restricting smoking.



EXPERIENCE COUNTS

SOLUTIONS FOR LEGAL ISSUES

Bringing experience, integrity and value to clients with municipal, corporate and individual legal needs – from local government, state regulation and business law to family, personal injury, trials and estate planning matters.

**WE'RE LARGE ENOUGH TO HANDLE YOUR NEEDS AND SMALL ENOUGH TO KNOW YOUR NAME.
CALL US IF WE CAN HELP.**

The choice of a lawyer is an important decision and should not be based solely upon advertisements.

130 S. BEMISTON • SUITE 200 • ST. LOUIS • MO • 63105 | 314.725.8788

CHGOLAW.COM 

Primary Causes of Contamination of Single-Stream Recycling

recycling's dirty dozen¹²

NEVER place these 12 ITEMS in a recycling bin or cart

recyclemoreSC
A 40BY2020 PARTNERSHIP PROGRAM

1 NO Plastic Bags

Plastic bags are a SERIOUS contaminant and jam sorting machines at recycling facilities. Plastic bags with a #2 that are clean, dry and empty may be recycled at participating grocery stores.



2 NO Plastic Bags with Recyclables Either

Workers have to slow the conveyor belts to open bags that contain recyclables. These inefficiencies waste time and money.



3 NO Shredded Paper and Other Small Items

Shredded paper and other small items often become litter before reaching the recycling center. Once there, they fall through the cracks of sorting machines, stick to belts and contaminate properly sorted material.



4 NO Scrap Metal

Scrap metal – such as steel, brass, iron and aluminum – cause excessive damage to recycling equipment. Take scrap metal to a scrap metal dealer or recycling center.



5 NO Hazardous Household Materials

Paint, automotive fluids, household cleaners and similar materials must be disposed of properly. Check to see if your county has a collection program or offers single-day collection events. If not, follow the instructions on the label.



6 NO Flattened Bottles or Cans

Sorting equipment separates “flats” (paper) from “rounds” (containers). When containers are flattened, the equipment mistakenly sends them to the paper side of the facility, contaminating the paper going to market.



7 NO Non-recyclable Plastics

Loose plastic lids, Styrofoam® and other plastic may not be recyclable where you live. Check with your local recycling program.



8 NO Caps/Lids on Glass Bottles or Jars

Metal lids can be removed and recycled loose in the bin or cart. Throw away plastic lids and caps from glass bottles and jars.



9 NO Liquids or Food

When bottles are compacted for shipping, liquids drip and splatter, creating a sticky, smelly mess. Empty and quickly rinse all containers before recycling.



10 NO Non-recyclable Glass

Glassware, ceramics, Pyrex baking dishes, light bulbs, fluorescent lamps, window glass and mirrors cannot be recycled. These types of glass often are treated with chemicals and have different melting points than traditional container glass (e.g., bottles and jars).



11 NO Rope-like Items

Water hoses, holiday lights, leather belts, etc., should not go in curbside bins or carts. These items wrap around machines. Holiday lights can be recycled at some scrap metal dealers.



12 NO Diapers or Bio-Hazardous Waste

Syringes and needles, diapers and other sanitary products ARE NOT recyclable and pose a risk to workers. Visit www.scdhec.gov/HomeAndEnvironment/Recycling/DisposingofNeedles/ to learn how to properly dispose of syringes and needles.



Please visit www.scdhec.gov/recycleheresc to see what is recycled where you live.



The 40by2020 Partnership is a group of public and private stakeholders dedicated to sharing knowledge, coordinating resources and working together to help South Carolina meet or exceed its 40 percent recycling goal set for 2020. Partnership members include PalmettoPride, Pratt Industries, Sonoco Recycling, the S.C. Beverage Association, the S.C. Department of Commerce and the S.C. Department of Health and Environmental Control.



MUNICIPAL LEAGUE
OF METRO ST. LOUIS

1034 S. Brentwood Blvd., Suite 410
Richmond Heights, MO 63117

PRSRT STD
U.S. POSTAGE
PAID
ST. LOUIS, MO
PERMIT # 3754

UPCOMING EVENTS

September 16 —19
MML Annual Conference

[https://mocities.site-ym.com/
page/AnnConf](https://mocities.site-ym.com/page/AnnConf)

September 21
Growing Global 2018

[http://worldtradecenter-stl.com/
events-calendar/events/growing-
global-2018/](http://worldtradecenter-stl.com/events-calendar/events/growing-global-2018/)



LINKING LOCAL COMMUNITIES
STRENGTHENING LOCAL GOVERNMENT

